



All the tools you need to
start, run and grow your
own high risk program



Case Study

How Riverside Healthcare Improved Its Effectiveness in Identifying High-risk Women

CASE STUDY

How Riverside Healthcare Improved Its Effectiveness in Identifying High-risk Women

Riverside Healthcare partnered with CancerIQ to transition from a paper-based process to electronic



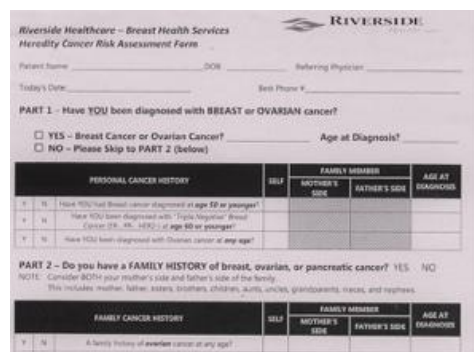
- **Clinical Setting:** Breast Center at a 336-bed hospital
- **Patient Volume:** 10,000 mammogram screenings/year
- **Accreditation:** ACR Breast Imaging Center of Excellence
- **Number of Locations:** 1
- **Parent System:** Riverside Healthcare
- **Geographic Setting:** Rural in a small city

Background

Riverside Healthcare opened a high-risk clinic at its Breast Center in 2016. For the first year, the center used paper forms to screen and identify women at elevated hereditary risk for breast and ovarian cancer. Though the paper process was easy to implement, the Breast Center looked to make it more effective and efficient.

The Challenge

- Paper required humans to evaluate results according to a complex, ever-changing set of guidelines.
- Paper required frequent updates to the paper form and retraining costs to stay up to date with guidelines.
- The paper resulted in lower patient accuracy in reporting information due to “multi-segmented” questions.

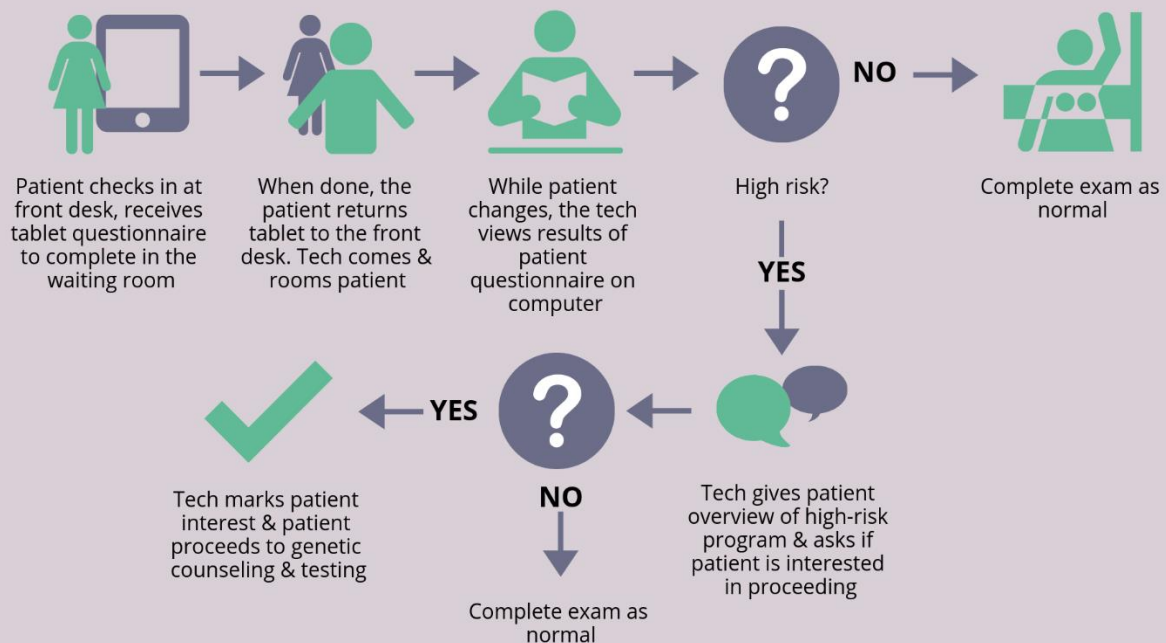


N	A family history with 3 or more breast cancers on the same side of the family diagnosed at any age? (This could include the patient)	
N	A family history of 3 or more breast, ovarian, or pancreatic cancers on the same side of the family diagnosed at any age? (This could include the patient)	
N	A family history of Triple Negative breast cancer (ER-, PR-, HER2-) at age 60 or younger?	

The Solution

In September 2017, the Breast Center replaced its paper process with CancerIQ alongside Epic. By implementing CancerIQ, the center now had an automated, systematic screening process that could identify all patients according to the latest NCCN guidelines. Likewise, the electronic system created a patient-friendly questionnaire that removed multi-segmented” questions and improved accuracy of the patient’s data entry.

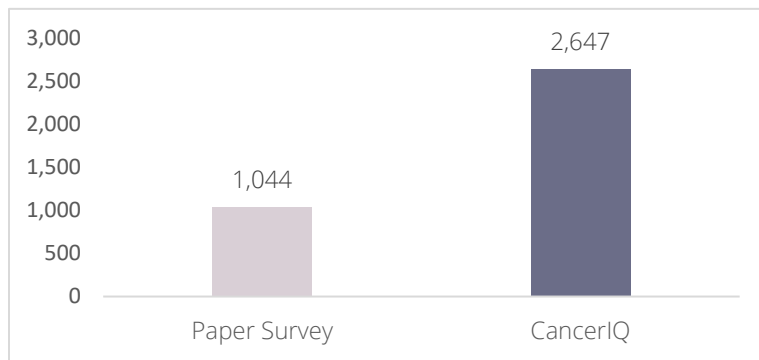
Workflow Process with CancerIQ



The Results

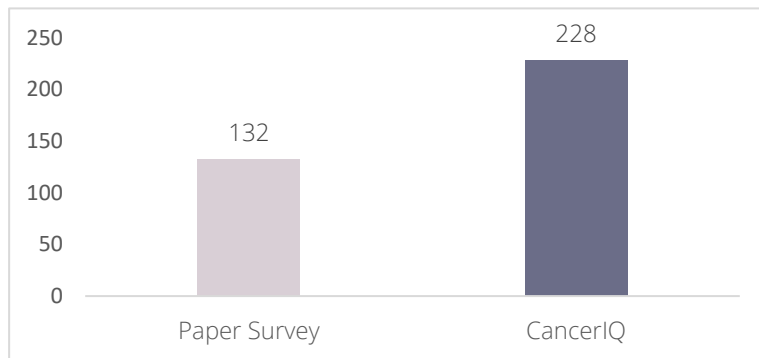
High-risk Identification

The Breast Center saw a 2.5x increase in the number of high-risk patients identified.



Genetic Testing

The Breast Center had a 1.75x increase in genetic testing.



User Experience

Over 90 percent of mammography patients completed the CancerIQ electronic survey prior to their appointment.

The techs cited less stress and improved satisfaction in the process, and liked the software's ease of use and instantaneous determination of patient risk.

2.5x

more patients identified

1.75x

more genetic testing

"The CancerIQ technology helped us overcome barriers to identifying women at increased risk for cancer by simplifying the screening process, providing immediate determination of patient risk, and reducing stress levels for both our patients and mammography technicians"

Julie Sieling, CNP, MSN, APN, NP-C
Creator of the Screening & Risk Assessment Program at Riverside Healthcare

ABOUT CANCERIQ

CancerIQ helps providers use genetic information to predict, pre-empt and prevent disease. We leverage unparalleled expertise in design, genetics and implementation science to identify all patients at risk and navigate them to the specialty services required. Our platform is supported by algorithms that automate the NCCN guidelines for providers, and a user-centered design approach that makes it easier for patients to understand. We help our partners offer genetic counseling and testing services to their entire patient population at a fraction of the time and cost. With CancerIQ, you can maximize the clinical and financial impact of using genetics in routine care. Together, we can help to detect and prevent the deadliest and earliest onset cancers.

Cancer IQ, Inc. | 515 North State Street, Suite #1075, Chicago, IL 60654